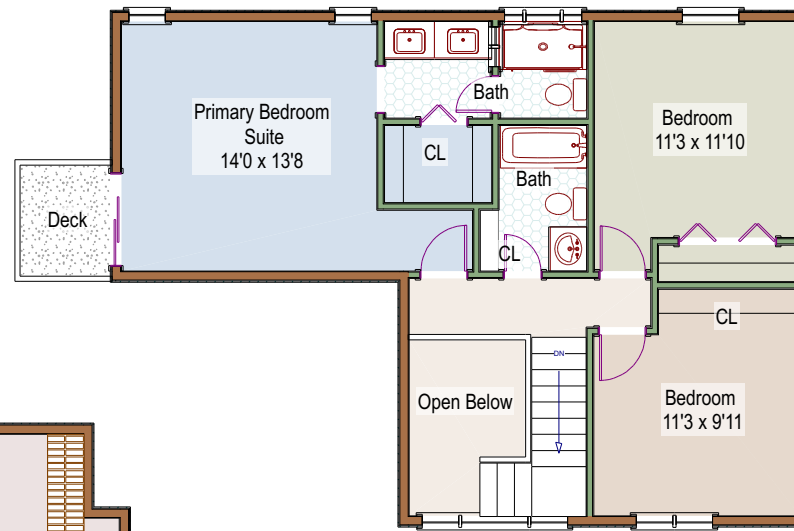


514 Hoptree Court
Boulder, Colorado

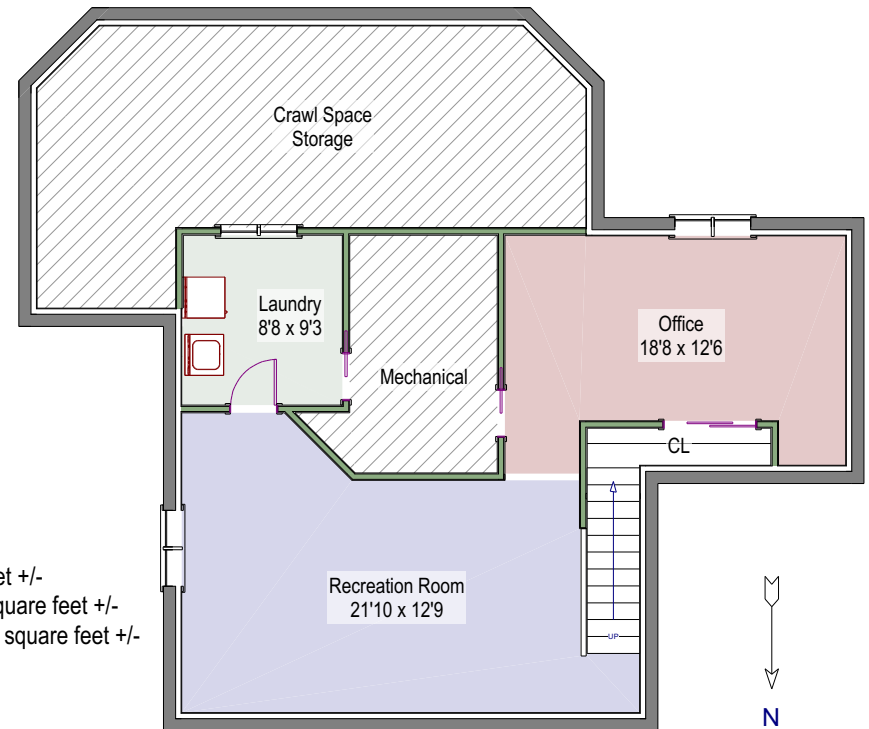
Main Level - 1363 square feet +/-



Upper Level - 814 square feet +/-



Lower Level - 915 square feet +/-
805 finished square feet +/-
110 unfinished square feet +/-



Patrick Dolan's Office
RE/Max of Boulder, Inc.
(303)441-5642 office
patrickdolanteam@gmail.com
www.patrick-dolan.com



Measurements are approximate and no responsibility is taken for any omission or mis-statement. These plans are for visual representation purposes only. Floor plan is not an architectural as-built. Square footage is determined using exterior wall dimensions and is not guaranteed. Floor plan is for the exclusive use of Patrick Dolan and may not be transferred or sold.

Floor Plans prepared by Overhead Views, (303)886-9578, esw@overheadviews.com