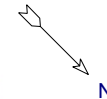


1156 Northridge Drive  
Erie, Colorado

Main Level - 1958 square feet +/-



Patrick Dolan's Office  
RE/Max of Boulder, Inc.  
(303)441-5642 office  
patrickdolanteam@gmail.com  
www.patrick-dolan.com

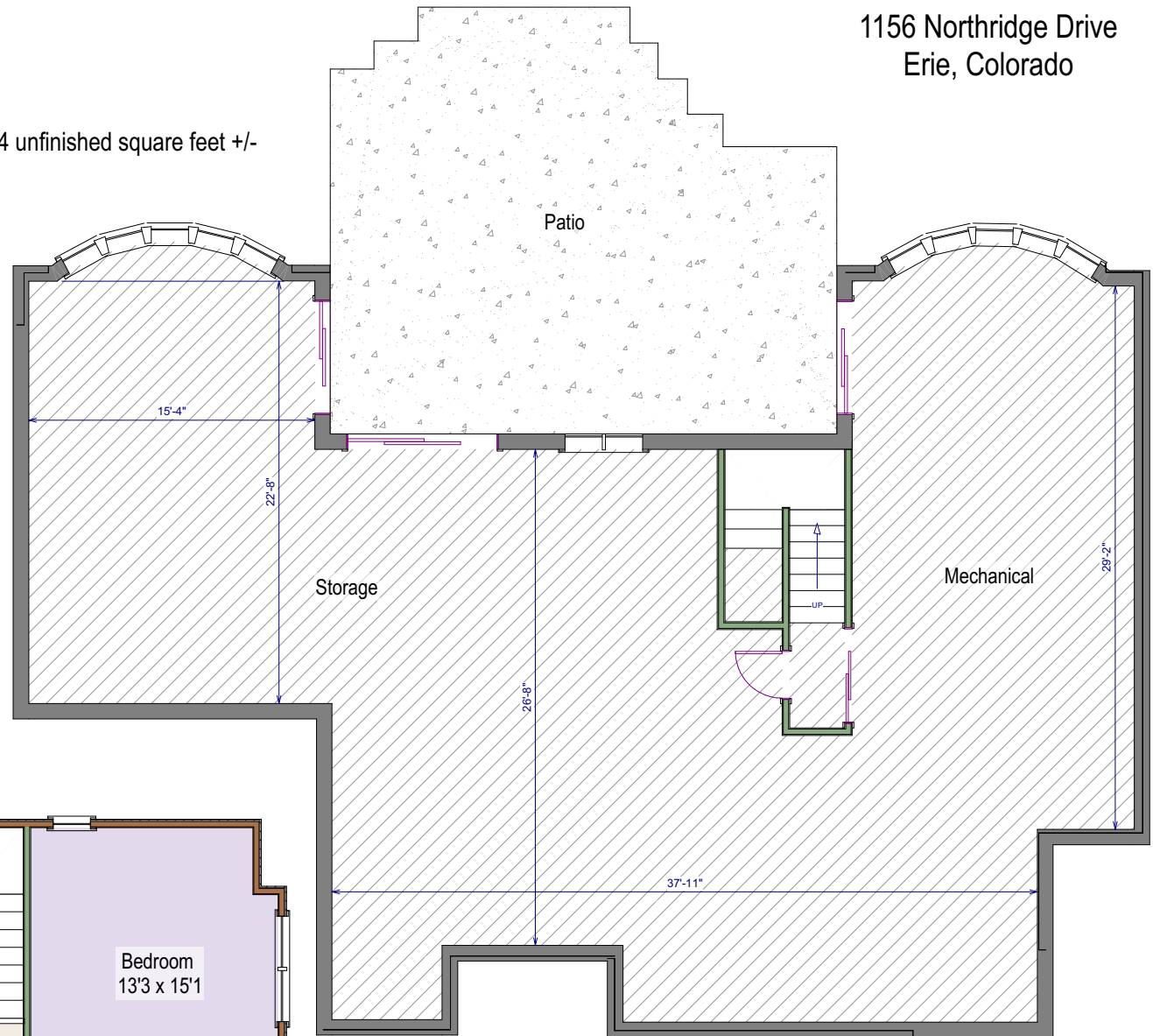


Measurements are approximate and no responsibility is taken for any omission or mis-statement. These plans are for visual representation purposes only. Floor plan is not an architectural as-built. Square footage is determined using exterior wall dimensions and is not guaranteed. Floor plan is for the exclusive use of Patrick Dolan and may not be transferred or sold.

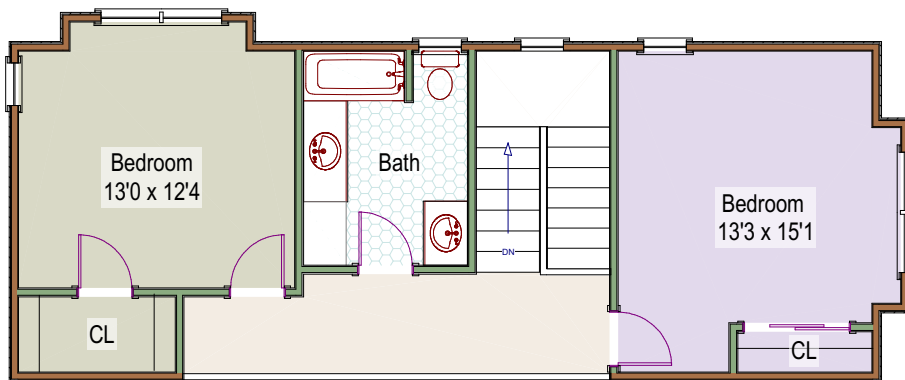
Floor Plans prepared by Overhead Views, (303)886-9578, esw@overheadviews.com

1156 Northridge Drive  
Erie, Colorado

Lower Level - 1944 unfinished square feet +/-



Upper Level - 680 square feet +/-



Open Below

Measurements are approximate and no responsibility is taken for any omission or mis-statement. These plans are for visual representation purposes only. Floor plan is not an architectural as-built. Square footage is determined using exterior wall dimensions and is not guaranteed. Floor plan is for the exclusive use of Patrick Dolan and may not be transferred or sold.

Floor Plans prepared by Overhead Views, (303)886-9578, [esw@overheadviews.com](mailto:esw@overheadviews.com)

Patrick Dolan's Office  
RE/Max of Boulder, Inc.  
(303)441-5642 office  
[patrickdolanteam@gmail.com](mailto:patrickdolanteam@gmail.com)  
[www.patrick-dolan.com](http://www.patrick-dolan.com)

